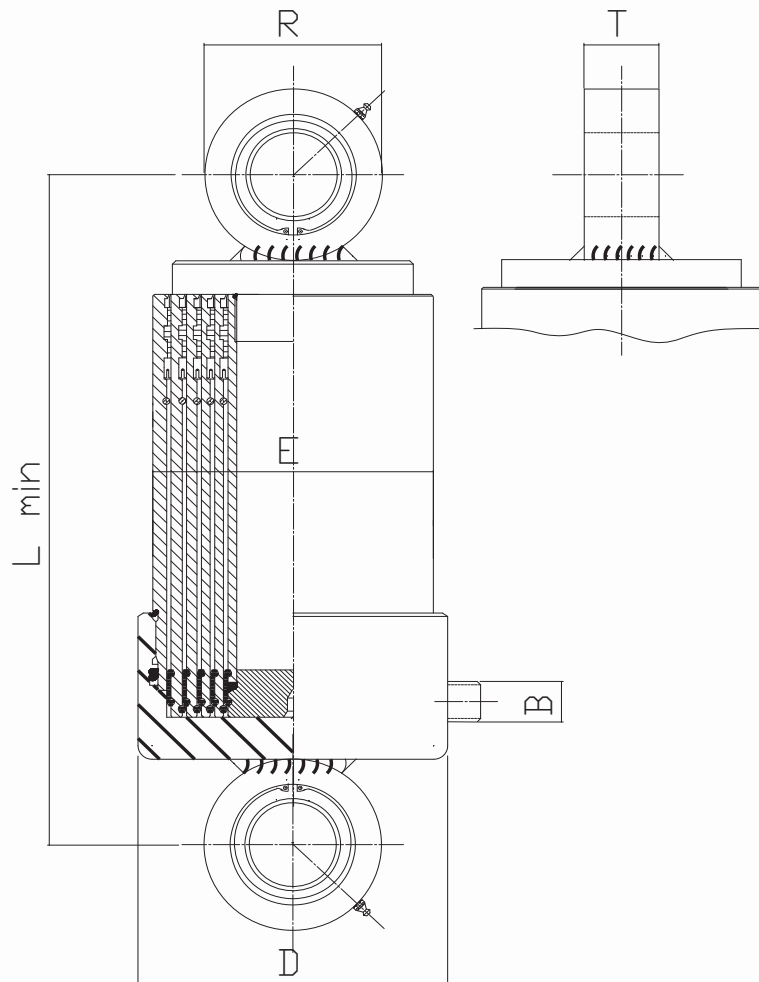


**LAGER/LAGER, Max arbetstryck = 21,0 MPa, Kromade steg**



Artikelnummer	Benämning	Ingående cylindersteg						Slaglängd	L min	Volym	Mått
		1	2	3	4	5	6	mm.	mm.	liter	
AK14651711-0864	LL 90/32-864	75	60	45	32			864	395	2,2	CC=L min B=3/8" utv. D=103 E=92 R=70 T=25 GE25ES
AK14651721-1264	LL 90/32-1264	75	60	45	32			1264	495	3,1	
AK14651731-1564	LL 90/32-1564	75	60	45	32			1564	570	3,9	
AK14651741-1764	LL 90/32-1764	75	60	45	32			1764	620	4,3	
AK14651751-2264	LL 90/32-2264	75	60	45	32			2264	745	5,5	
AK13651711-0648	LL 90/45-648	75	60	45				648	395	2,0	
AK13651721-0948	LL 90/45-948	75	60	45				948	495	2,9	
AK13651731-1173	LL 90/45-1173	75	60	45				1173	570	3,5	
AK13651741-1323	LL 90/45-1323	75	60	45				1323	620	4,0	
AK13651751-1698	LL 90/45-1698	75	60	45				1698	745	5,1	

## LAGER/LAGER, Max arbetstryck = 21,0 MPa, Kromade steg

Artikelnummer	Benämning	Ingående cylindersteg						Slaglängd	L min	Volym	Mått
		1	2	3	4	5	6	mm.	mm.	liter	
AK14655111-0864	LL 105/45-864	90	75	60	45			864	410	3,9	CC=L min B=1/2" utv. D=118 E=107 R=82 T=29 GE30ES
AK14655121-1264	LL 105/45-1264	90	75	60	45			1264	510	5,7	
AK14655131-1564	LL 105/45-1564	90	75	60	45			1564	585	7,0	
AK14655141-1764	LL 105/45-1764	90	75	60	45			1764	635	7,9	
AK14655151-2264	LL 105/45-2264	90	75	60	45			2264	760	10,0	
AK13655111-0648	LL 105/60-648	90	75	60				648	410	3,5	
AK13655121-0948	LL 105/60-948	90	75	60				948	510	5,0	
AK13655131-1173	LL 105/60-1173	90	75	60				1173	585	6,2	
AK13655141-1323	LL 105/60-1323	90	75	60				1323	635	7,0	
AK13655151-1698	LL 105/60-1698	90	75	60				1698	760	8,9	
AK15638911-1080	LL 120/45-1080	105	90	75	60	45		1080	419	5,4	CC=L min B=1/2" utv. D=133 E=122 R=88 T=30 GE35ES
AK15638921-1580	LL 120/45-1580	105	90	75	60	45		1580	519	7,8	
AK15638931-1955	LL 120/45-1955	105	90	75	60	45		1955	594	9,6	
AK15638941-2205	LL 120/45-2205	105	90	75	60	45		2205	644	10,7	
AK15638951-2830	LL 120/45-2830	105	90	75	60	45		2830	769	13,8	
AK14638911-0864	LL 120/60-864	105	90	75	60			864	419	5,0	
AK14638921-1264	LL 120/60-1264	105	90	75	60			1264	519	7,2	
AK14638931-1564	LL 120/60-1564	105	90	75	60			1564	594	8,9	
AK14638941-1764	LL 120/60-1764	105	90	75	60			1764	644	10,0	
AK14638951-2264	LL 120/60-2264	105	90	75	60			2264	769	12,8	
AK13638911-0648	LL 120/75-648	105	90	75				648	419	4,4	
AK13638921-0948	LL 120/75-948	105	90	75				948	519	6,3	
AK13638931-1173	LL 120/75-1173	105	90	75				1173	594	8,6	
AK13638941-1323	LL 120/75-1323	105	90	75				1323	644	8,8	
AK13638951-1698	LL 120/75-1698	105	90	75				1698	769	11,2	
AK16657511-1296	LL 138/45-1296	120	105	90	75	60	45	1296	423	8,8	CC=L min B=1/2" utv. D=158,5 E=138 R=88 T=30 GE35ES
AK16657521-1896	LL 138/45-1896	120	105	90	75	60	45	1896	523	12,5	
AK16657531-2346	LL 138/45-2346	120	105	90	75	60	45	2346	598	15,4	
AK16657541-2646	LL 138/45-2646	120	105	90	75	60	45	2646	648	17,5	
AK16657551-3354	LL 138/45-3354	120	105	90	75	60	45	3354	792	22,0	
AK15657511-1080	LL 138/60-1080	120	105	90	75	60		1080	423	7,6	
AK15657521-1580	LL 138/60-1580	120	105	90	75	60		1580	523	10,9	
AK15657531-1955	LL 138/60-1955	120	105	90	75	60		1955	598	13,5	
AK15657541-2205	LL 138/60-2205	120	105	90	75	60		2205	648	15,1	
AK15657551-2830	LL 138/60-2830	120	105	90	75	60		2830	773	19,3	
AK15657561-3295	LL 138/60-3295	120	105	90	75	60		3295	892	24,8	

**LAGER/LAGER, Max arbetstryck = 21,0 MPa, Kromade steg**

Artikelnummer	Benämning	Ingående cylindersteg						Slaglängd	L min	Volym	Mått
		1	2	3	4	5	6	mm.	mm.	liter	
AK14657511-0864	LL 138/75-864	120	105	90	75			864	423	6,9	CC=L min B=1/2" utv. D=158,5 E=138 R=88 T=30 GE35ES
AK14657521-1264	LL 138/75-1264	120	105	90	75			1264	523	10,0	
AK14657531-1564	LL 138/75-1564	120	105	90	75			1564	598	12,3	
AK14657541-1764	LL 138/75-1764	120	105	90	75			1764	648	13,9	
AK14657551-2264	LL 138/75-2264	120	105	90	75			2264	773	17,7	
AK14657561-2636	LL 138/75-2636	120	105	90	75			2636	892	22,7	
AK13657511-0648	LL 138/90-648	120	105	90				648	426	6,5	
AK13657521-0948	LL 138/90-948	120	105	90				948	523	9,4	
AK13657531-1173	LL 138/90-1173	120	105	90				1173	598	11,5	
AK13657541-1323	LL 138/90-1323	120	105	90				1323	648	13,0	
AK13657551-1698	LL 138/90-1698	120	105	90				1698	792	16,6	
AK13657561-1977	LL 138/90-1977	120	105	90				1977	892	19,4	
AK16657631-2346	LL 160/60-2346	140	122	105	90	75	60	2346	632	21,2	CC=L min B=3/4" utv. D=178 E=162 R=108 T=43 GE50ES
AK16657641-2646	LL 160/60-2646	140	122	105	90	75	60	2646	682	23,9	
AK16657651-3354	LL 160/60-3354	140	122	105	90	75	60	3354	825	30,1	
AK16657661-3954	LL 160/60-3954	140	122	105	90	75	60	3954	925	35,7	
AK15657621-1580	LL 160/75-1580	140	122	105	90	75		1580	556	16,2	
AK15657631-1955	LL 160/75-1955	140	122	105	90	75		1955	632	18,6	
AK15657641-2205	LL 160/75-2205	140	122	105	90	75		2205	682	21,0	
AK15657651-2830	LL 160/75-2830	140	122	105	90	75		2830	806	26,7	
AK15657661-3295	LL 160/75-3295	140	122	105	90	75		3295	925	33,5	
AK14657631-1564	LL 160/90-1564	140	122	105	90			1564	632	20,1	
AK14657641-1764	LL 160/90-1764	140	122	105	90			1764	682	22,6	
AK14657651-2264	LL 160/90-2264	140	122	105	90			2264	806	28,9	
AK14657661-2636	LL 160/90-2636	140	122	105	90			2636	925	30,2	