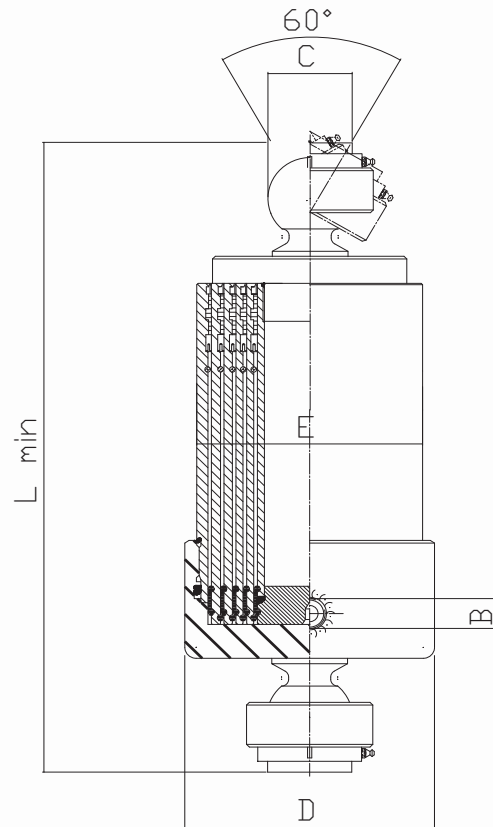


**KULA/KULA, Max arbetstryck = 21,0 MPa, Kromade steg**



Artikelnummer	Benämning	Ingående cylindersteg						Slaglängd	L min	Volym	Mått
		1	2	3	4	5	6	mm.	mm.	liter	
AK14246811-0864	KK 90/32-864	75	60	45	32			864	453	2,2	CC=L min B=3/8" C=53 D=103 E=92
AK14246821-1264	KK 90/32-1264	75	60	45	32			1264	553	3,1	
AK14246831-1564	KK 90/32-1564	75	60	45	32			1564	628	3,9	
AK14246841-1764	KK 90/32-1764	75	60	45	32			1764	678	4,3	
AK14246851-2264	KK 90/32-2264	75	60	45	32			2264	803	5,5	
AK13247011-0648	KK 90/45-648	75	60	45				648	453	2,0	
AK13247021-0948	KK 90/45-948	75	60	45				948	553	2,9	
AK13247031-1173	KK 90/45-1173	75	60	45				1173	628	3,5	
AK13247041-1323	KK 90/45-1323	75	60	45				1323	678	4,0	
AK13247051-1698	KK 90/45-1698	75	60	45				1698	803	5,1	

## KULA/KULA, Max arbetstryck = 21,0 MPa, Kromade steg

Artikelnummer	Benämning	Ingående cylindersteg						Slaglängd	L min	Volym	Mått
		1	2	3	4	5	6	mm.	mm.	liter	
AK14628711-0864	KK 105/45-864	90	75	60	45			864	456	3,9	CC=L min B=1/2" utv C=53 D=118 E=107
AK14628721-1264	KK 105/45-1264	90	75	60	45			1264	556	5,7	
AK14628731-1564	KK 105/45-1564	90	75	60	45			1564	631	7,0	
AK14628741-1764	KK 105/45-1764	90	75	60	45			1764	681	7,9	
AK14628751-2264	KK 105/45-2264	90	75	60	45			2264	806	10	
AK13656811-0648	KK 105/60-648	90	75	60				648	456	3,5	
AK13656821-0948	KK 105/60-948	90	75	60				948	556	5,0	
AK13656831-1173	KK 105/60-1173	90	75	60				1173	631	6,2	
AK13656841-1323	KK 105/60-1323	90	75	60				1323	681	7,0	
AK15247211-1080	KK 120/45-1080	105	90	75	60	45		1080	459	5,4	CC=L min B=1/2" utv. C=53 D=133 E=122
AK15247221-1580	KK 120/45-1580	105	90	75	60	45		1580	559	7,8	
AK15247231-1955	KK 120/45-1955	105	90	75	60	45		1955	634	9,6	
AK15247241-2205	KK 120/45-2205	105	90	75	60	45		2205	684	10,7	
AK15247251-2830	KK 120/45-2830	105	90	75	60	45		2830	809	3,8	
AK14247411-0864	KK 120/60-864	105	90	75	60			864	459	5,0	
AK14247421-1264	KK 120/60-1264	105	90	75	60			1264	559	7,2	
AK14247431-1564	KK 120/60-1564	105	90	75	60			1564	634	8,9	
AK14247441-1764	KK 120/60-1764	105	90	75	60			1764	684	10,0	
AK14247451-2264	KK 120/60-2264	105	90	75	60			2264	809	12,8	
AK13247611-0648	KK 120/75-648	105	90	75				648	459	4,4	
AK13247621-0948	KK 120/75-948	105	90	75				948	559	6,3	
AK13247631-1173	KK 120/75-1173	105	90	75				1173	634	8,6	
AK13247641-1323	KK 120/75-1323	105	90	75				1323	684	8,8	
AK13247651-1698	KK 120/75-1698	105	90	75				1698	809	11,2	
AK16247811-1323	KK 138/45-1323	120	105	90	75	60	45	1323	463	8,8	CC=L min B=1/2" utv. C=53 D=158,5 E=138
AK16247821-1896	KK 138/45-1896	120	105	90	75	60	45	1896	563	12,5	
AK16247831-2346	KK 138/45-2346	120	105	90	75	60	45	2346	638	15,4	
AK16247841-2646	KK 138/45-2646	120	105	90	75	60	45	2646	688	17,5	
AK16247851-3354	KK 138/45-3354	120	105	90	75	60	45	3354	832	22,0	
AK15248011-1080	KK 138/60-1080	120	105	90	75	60		1080	463	7,6	
AK15248021-1580	KK 138/60-1580	120	105	90	75	60		1580	563	10,9	
AK15248031-1955	KK 138/60-1955	120	105	90	75	60		1955	638	13,5	
AK15248041-2205	KK 138/60-2205	120	105	90	75	60		2205	688	15,1	
AK15248051-2830	KK 138/60-2830	120	105	90	75	60		2830	813	19,3	
AK15248061-3295	KK 138/60-3295	120	105	90	75	60		3295	932	24,8	
AK14248211-0864	KK 138/75-864	120	105	90	75			864	463	6,9	
AK14248221-1264	KK 138/75-1264	120	105	90	75			1264	563	10,0	
AK14248231-1564	KK 138/75-1564	120	105	90	75			1564	638	12,3	
AK14248241-1764	KK 138/75-1764	120	105	90	75			1764	688	13,9	
AK14248251-2264	KK 138/75-2264	120	105	90	75			2264	813	17,7	
AK14248261-2636	KK 138/75-2636	120	105	90	75			2636	932	22,7	

**KULA/KULA, Max arbetstryck = 21,0 MPa, Kromade steg**

Artikelnummer	Benämning	Ingående cylindersteg						Slaglängd	L min	Volym	Mått
		1	2	3	4	5	6	mm.	mm.	liter	
AK13656911-0648	KK 138/90-648	120	105	90				648	463	6,5	CC=L min B=1/2" utv. C=53 D=158,5 E=138
AK13656921-0948	KK 138/90-948	120	105	90				948	563	9,4	
AK13656931-1173	KK 138/90-1173	120	105	90				1173	638	11,5	
AK13656941-1323	KK 138/90-1323	120	105	90				1323	688	13,0	
AK13656951-1698	KK 138/90-1698	120	105	90				1698	813	16,6	
AK13656961-1977	KK 138/90-1977	120	105	90				1977	932	19,4	
AK16248631-2346	KK 160/60-2346	140	122	105	90	75	60	2346	692	21,2	CC=L min B=3/4" utv. C=60 D=178 E=162
AK16248641-2646	KK 160/60-2646	140	122	105	90	75	60	2646	742	23,9	
AK16248661-3354	KK 160/60-3354	140	122	105	90	75	60	3354	885	30,1	
AK16248671-3954	KK 160/60-3954	140	122	105	90	75	60	3954	985	35,7	
AK15248821-1580	KK 160/75-1580	140	122	105	90	75		1580	616	16,2	
AK15248831-1955	KK 160/75-1955	140	122	105	90	75		1955	692	18,6	
AK15248841-2205	KK 160/75-2205	140	122	105	90	75		2205	742	21,0	
AK15248851-2830	KK 160/75-2830	140	122	105	90	75		2830	866	26,7	
AK15248861-3295	KK 160/75-3295	140	122	105	90	75		3295	985	33,5	
AK14657031-1564	KK 160/90-1564	140	122	105	90			1564	692	20,1	
AK14657041-1764	KK 160/90-1764	140	122	105	90			1764	742	22,6	
AK14657051-2264	KK 160/90-2264	140	122	105	90			2264	866	28,9	
AK14657061-2636	KK 160/90-2636	140	122	105	90			2636	985	30,2	